

psa.gov.qa

جهاز التخطيط والإحصاء
Planning and Statistics Authority
دولة قطر • State of Qatar



INFOGRAPHIC OF WATER STATISTIC IN QATAR 2021



RENEWABLE FRESHWATER RESOURCES

Precipitation (Million m3 per year)

- 11.0 DOHA INTERNATIONAL AIRPORT
- 58.2 Long-term annual average rainfall (1962-2021)

121.4 Renewable freshwater resources
(Million m3 per year)

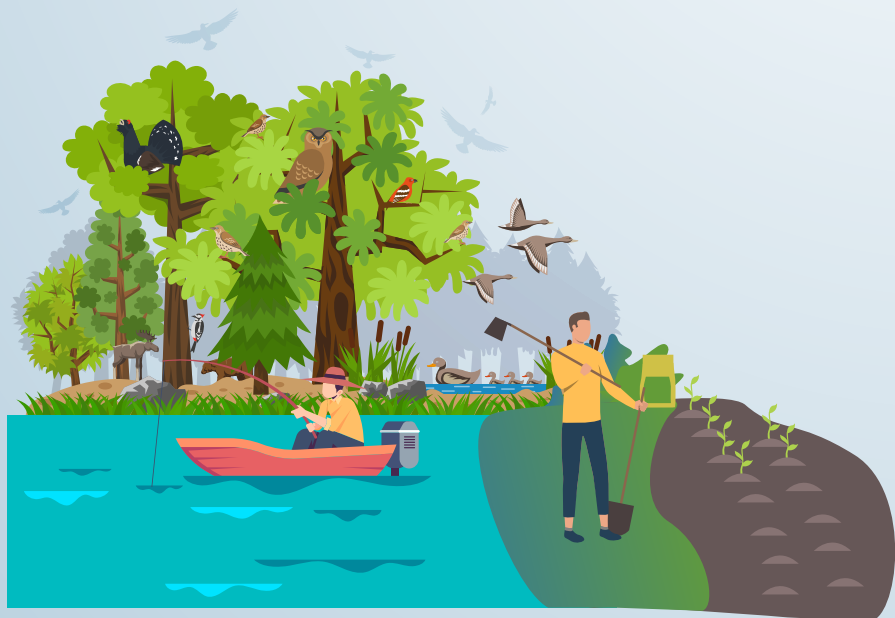
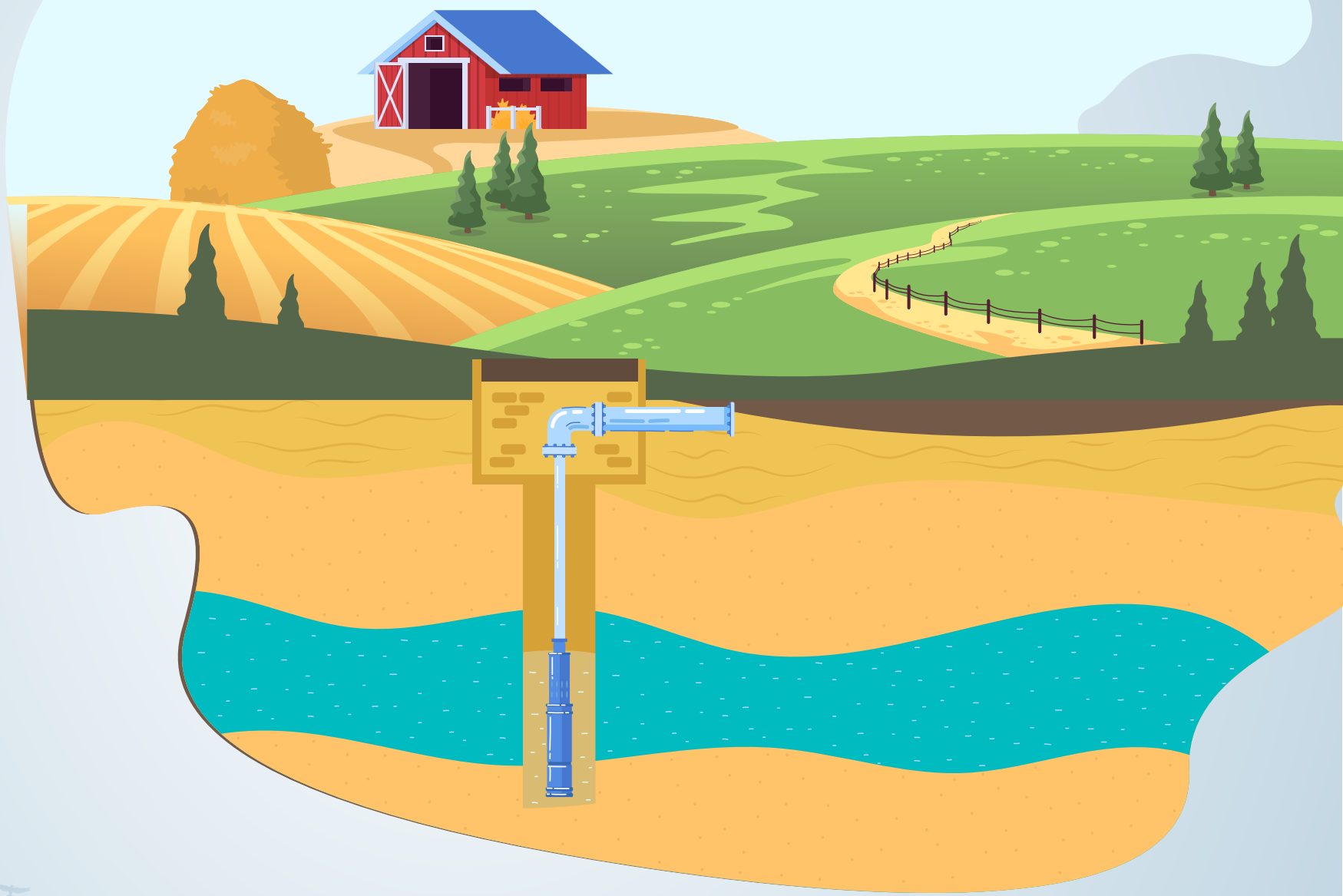
Water production (water available for use) (Million m3 per year)

- 669 Desalination of sea water
- 250 Fresh groundwater
- 185 Reuse of treated wastewater
- 40.8 Real Losses

FRESHWATER ABSTRACTION AND USE

250 (Million m³ per year)

Groundwater abstracted



230 (Million m³ per year)

**Agriculture, forestry and fishing
(ISIC 01-03)**



20 (Million m³ per year)

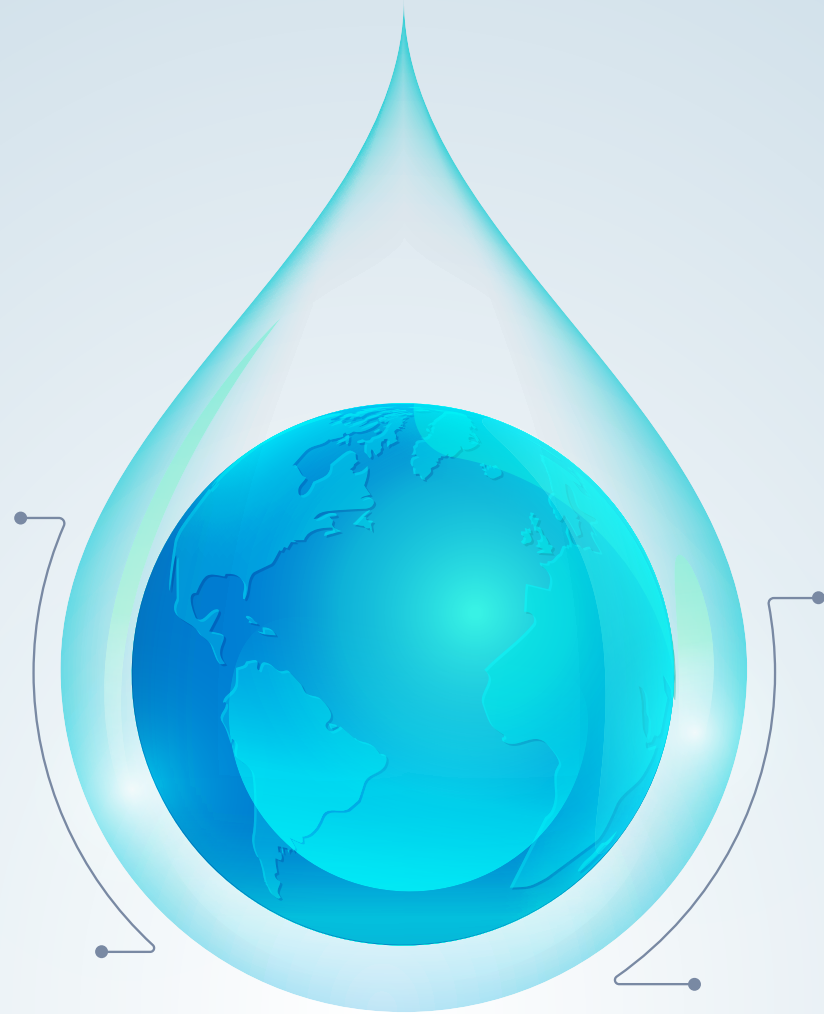
Other economic activities

WATER SUPPLY INDUSTRY (ISIC 36)



Gross water supplied by
water supply industry
(ISIC 36)

669

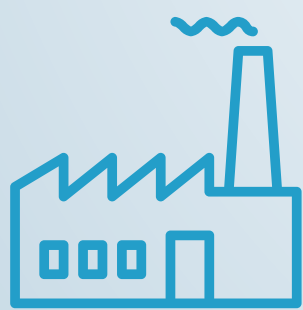


AVERAGE WATER PER CAPITA
CONSUMPTION Based On Au-
thorized Consumption of System
Input Volume, Net of Losses

245

(thousand m3 per year)

Proportion of population using safely managed drinking water services (Million m3 per year)



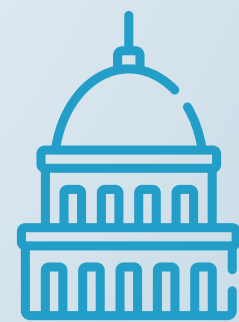
Industry

30



Commercial

84



Government

181



Domestic

293



Agriculture

311

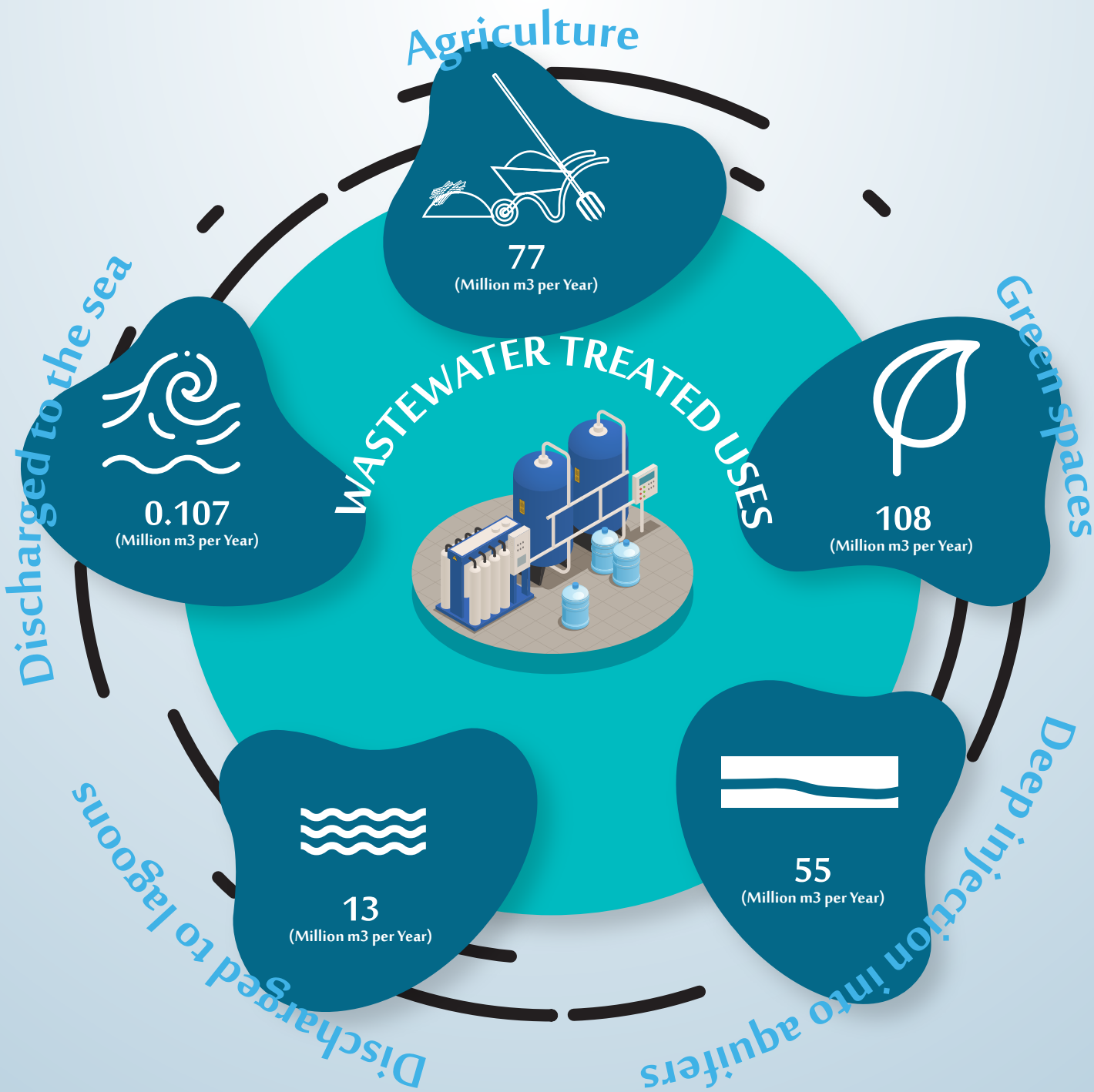
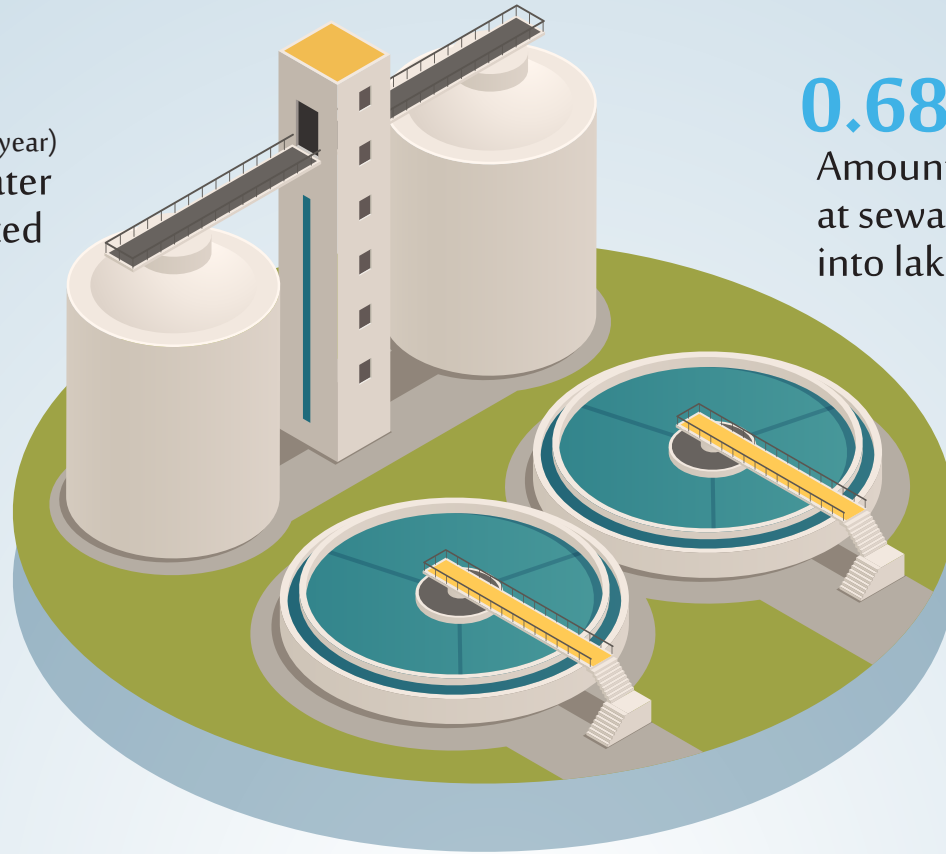
WASTEWATER GENERATION AND TREATMENT

255 (Million m3 per year)
Volume of wastewater collected

0.68 (Million m3 per year)
Amount of wastewater not collected at sewage plant and is discharged into lakes

253 (Million m3 per year)
Volume of wastewater treated

210
Sewage sludge production (1000 Ton)



WATER INFRASTRUCTURE



Water Stations



9

Desalination stations

25

Multi-Stage Flash Distillation (MSF)

134

Reservoirs

35

Reverse Osmose (RO)

10

Multiple effect distillation (MED)

Design Capacity of stations (thousand m3 per Day)

2444

Desalination stations

1446

Multi-Stage Flash 4 Distillation (MSF)

712

Reverse Osmose (RO)

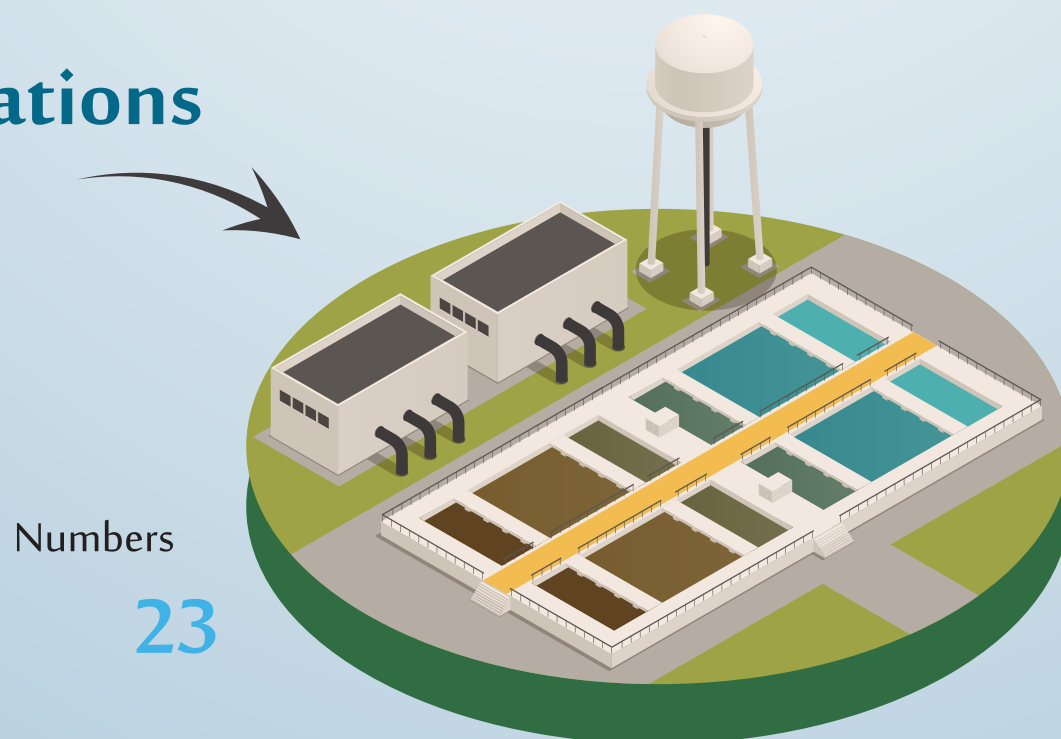
286

Multiple effect distillation (MED)

10.6

Reservoirs

WWTP stations



Numbers

23

Design Capacity

994 (thousand m3 per Day)

QUALITY OF DRINKING WATER



RESULTS OF BACTERIOLOGICAL TESTS OF DRINKING WATER SAMPLES (%)

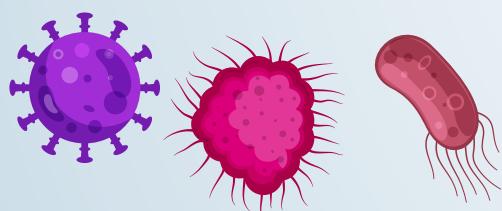
- 1.9 Public sources
- 13 Private sources
- 11 Total



RESULTS OF BACTERIOLOGICAL TESTS OF Bottled WATER SAMPLES (%)

- 0.9 Bacteriological
- 0 Chemical

RESULTS OF BACTERIOLOGICAL TESTS OF Desalination plant WATER SAMPLES



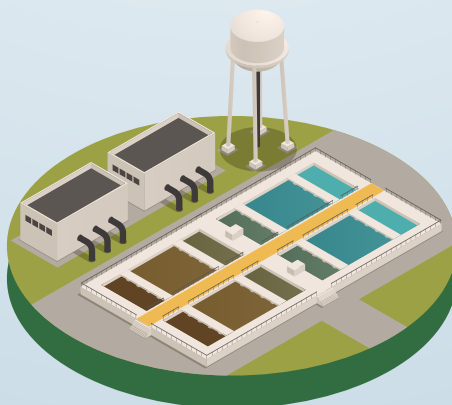
0 Bacteriological

3 Chemical



QUALITY OF TREATED WASTEWATER

0%



0%

RESULTS OF Detailed tests - fecal coliform

RESULTS OF Parasite Test (worms)

QUALITY OF MARINE WATER

<p>BOD</p> <p>4.5 Khawr Al'Udayd 4.7 Mesaieed 4.1 Al-Wakrah 4.6 Ras Abu Funtas 4.6 Doha 4.9 Al-Khor 5.1 Dakhirah 5.5 Ras Laffan 4.7 Ras Rakn 5.1 Dukhan NM Salwa</p>	<p>Salinity (g/L)</p> <p>50.1 Khawr Al'Udayd 45.6 Mesaieed 41.3 Al-Wakrah 41.4 Ras Abu Funtas 41.6 Doha 41.5 Al-Khor 41.3 Dakhirah 40.5 Ras Laffan 40.8 Ras Rakn 53.7 Dukhan NM Salwa</p>	<p>Ph</p> <p>8.0 Khawr Al'Udayd 7.8 Mesaieed 8.3 Al-Wakrah 8.1 Ras Abu Funtas 8.1 Doha 8.3 Al-Khor 8.1 Dakhirah 8.1 Ras Laffan 8.0 Ras Rakn 8.1 Dukhan NM Salwa</p>	<p>Pb (µg/l)</p> <p>0.1 Khawr Al'Udayd 0.2 Mesaieed 0.5 Al-Wakrah 1.9 Ras Abu Funtas 0.4 Doha 0.4 Al-Khor 1.0 Dakhirah 0.8 Ras Laffan 0.7 Ras Rakn 0.5 Dukhan NM Salwa</p>
<p>Nitrite (NO₂) (mg/l)</p> <p>1.0 Khawr Al'Udayd 2.6 Mesaieed 1.0 Al-Wakrah 3.3 Ras Abu Funtas 0.9 Doha 1.3 Al-Khor 0.6 Dakhirah 0.9 Ras Laffan 0.9 Ras Rakn 1.6 Dukhan NM Salwa</p>	<p>Phosphate (PO₄) (mg/l)</p> <p>3.6 Khawr Al'Udayd 1.7 Mesaieed 4.3 Al-Wakrah 2.6 Ras Abu Funtas 6.6 Doha 1.9 Al-Khor 2.8 Dakhirah 4.7 Ras Laffan 1.7 Ras Rakn 2.1 Dukhan NM Salwa</p>	<p>Chlorophyll a (µg/l)</p> <p>0.7 Khawr Al'Udayd 1.7 Mesaieed 1.3 Al-Wakrah 1.1 Ras Abu Funtas 2.6 Doha 1.2 Al-Khor 1.0 Dakhirah 1.0 Ras Laffan 0.3 Ras Rakn 0.4 Dukhan NM Salwa</p>	



OIL SPILL INCIDENTS

- Number 52
- AMOUNT OF SPILL M3 359

AMOUNT OF MARINE WASTE AND DEBRIS BY TYPE

- Wood waste 315ton
- Coastal waste 617ton
- Total 932 ton



Area of Marine Protected Areas km2

- Al Thakhira 179.14
- Khor Al Odaid 542.04
- Total 721.18

